

UNITED[®]

Oil-Filled Radiator INSTRUCTION MANUAL



Model UHR-873

**This product is only suitable for well insulated spaces or
occasional use**

DO NOT TURN THE HEATER UPSIDE-DOWN DURING OPERATION.

IMPORTANT SAFEGUARDS

1. Read the instructions carefully before use and save them for future reference.
2. Always disconnect the heater from the main supply when not in use and when cleaning.
3. Do not leave the heater unattended while in operation.
4. Never cover the heater as this may lead to risk of fire.
5. Keep a distance of at least 90 cm between the heater and any combustible material, such as furniture, curtains, bedding cloths or papers.
6. Keep the heater clean. Do not allow objects to enter the ventilation, as this may cause electric shock, fire or damage the heater.
7. Close supervision is required when any appliance is used near or by children.
8. Never allow the cord get in touch with wet or hot surfaces, become twisted or be within the reach of children.
9. Do not use outdoors.
10. Do not place on or near a hot gas or electric burner.
11. Never use the appliance with a damaged cord or plug or after the appliance has malfunctioned or has been damaged in any way.
12. Never attempt to open any part or dismantle the controls.
1. Responsibility for failure cannot be accepted if these instructions have been ignored.
13. Do not use the appliance for anything other than its intended use.
14. This appliance is intended for household use only.
15. Follow the regulations concerning the disposal of the oil when scraping the appliance.
16. Any repair must be referred to an authorized service agent only.
17. If the supply cord is damaged, it must be replaced by the manufacturer or its service agent in order to avoid a hazard.
18. The heater must not be located immediately below a socket-outlet.
19. Do not use this heater in the immediate surroundings of a bath, a shower or a swimming pool.
20. This heater is filled with a precise quantity of special oil. Repairs requiring opening of the oil container are only to be made by the manufacturer or his service agent who should be contacted if there is an oil leakage.
21. The appliance is not intended for use by persons (including children) with reduced physical, sensory or mental capabilities, or lack of experience and knowledge, unless they have been given supervision or instruction concerning use of the appliance by a person

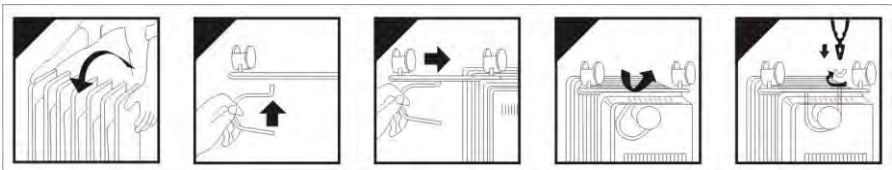
responsible for their safety

22. Children should be supervised to ensure that they do not play with the appliance.

ASSEMBLY

Remove the heater and all the accessories from the carton.

1. Turn the heater upside down.
2. Position the wheel base assemblies between the end fins.
3. Attach them to the heater using the U-bolts and wing nuts supplied.
4. Tighten the wing nuts.
5. Turn the heater the right way up.



PARTS DESCRIPTION

1. Power switch
2. Thermostat knob
3. Handle
4. Oil filled fins
5. Castors
6. Cord storage
7. Timer
8. Fan Operation



OPERATING YOUR OIL-FILLED RADIATOR

Place the heater on the floor at least 90 cm away from the wall and any other objects such as furniture, curtains or plants.

Make sure the power supply used corresponds to the one on the rating label.

With the thermostat control switch and the power setting switches in the '0' position, plug the heater into the main power supply.

1. Room temperature can be adjusted using the thermostat. Turn the thermostat knob clockwise, to increase the heat, and anti-clockwise to decrease the temperature, until you reach the desired temperature.
2. Switch the heater to one of the following power settings.
 - a) Push switch one (I) 1000W
 - b) Push switch two (II) 1500W
 - c) Push together switches one & two (I + II) for 2500W.
 - c) Add separately the air blower: 400W
3. The power switch lights up, when activated.
4. Turning the thermostat control clockwise will increase the "set" temperature.
5. Turning the thermostat anti-clockwise will decrease the "set" temperature.
6. Do not cover the heater at any time during operation. There is a risk of fire if the heater is covered.
7. Once you have finished using your heater, turn the power switches, and the thermostat control switch to the "0" positions, and unplug from the mains supply.

Timer function

The center of the timer has a 2 position slide switch.

In the "clock symbol" position, the timer will switch the heater on and off at times set by the segments (see "Timer setting", below).

The position denoted by the "I", is a timer override position and the timer will continue to run, but power will be fed continuously to the heater. This enables the heater to be on all the time if required.

Clock setting

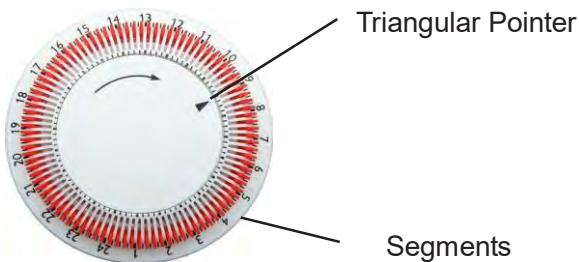
IMPORTANT!

- Do not turn the timer dial anticlockwise. Always turn in clockwise direction.
- The timer is in effect an electric clock and only works when the plug is connected to the power supply. Whenever the plug is disconnected, the timer stops and must be reset.

The timer, as all clocks, must be set to the current time. For example, if it is 9 a.m., turn the dial clockwise (in arrow direction) until 9 is aligned with the triangular pointer (Fig.3).

Timer setting

Fig.3



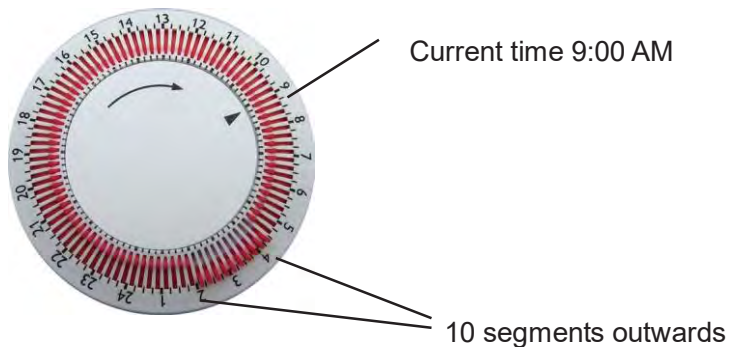
- There are 96 segments around the circumference, each segment being equivalent to 15 minutes of time. With this timer you can preset the time and duration of the periods that it is desired to operate the heater, in any 24hr period. With the timer you can set your setting to within 15 minutes and program up to 48 cycles (1 cycle = 1 “ON” + 1 “OFF”) over a period of 24 hours.
- Using your fingers, push the segments inwards or pull them outwards.
 - * When the segment is in the outward position (towards the numbers of the dial), the heater will operate during that 15 minute period.
 - * If the segment is in the inward position, the heater will not operate during this period.

- Please note when you first use your heater, all the segments are outwards. You must pull outwards those segments for the period(s) that you want the heater to work. (If you want to bypass the timer, check that all the 96 segments are outward) (see Fig 3).

Timer operation

- Plug in the heater.
- Unless the clock is already set, turn the timer dial clockwise to set the clock with the current time of day (see “Clock setting”).
- Pull the segments outwards for the period you want the heater to operate. For example, Fig 4. shows that the appliance will operate from 2 AM to 4.30 AM (10 segments outwards).
- Push the power switch.
- Once you have set the segments for the desired heating period, your heater will cycle on and off according to these settings.
- As long as you keep the heater plugged in, the timer will continue to keep proper time.

Fig.4



Fan Operation

1. The fan can be switched on by pushing the button of the fan on the control panel. The fan is switched on when the push button is in the inward position and off when the button is in the outward position.
2. Note: The fan will only operate when the timer is either in the override position (slide switch next to the “I” symbol) or at some point during the timed “on” position.

CLEANING

1. Always unplug the heater before any cleaning task
2. Clean the outer surface wiping with a damp cloth and dry carefully
3. Do not use polishing or abrasive products.

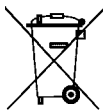
STORING YOUR OIL-FILLED RADIATOR

1. Save the box for off season storage.
2. Clean the heater following the cleaning instructions above.
3. Remove the wheel base assemblies.
4. Place the heater, and wheel assemblies in the original box, and store in a cool and dry place.
5. If you choose to store your heater fully assembled be sure to cover it to protect it from dust.

Information requirements for electric local space heaters

Model identifier(s): UHR-873					
Item	Symbol	Value	Unit	Item	Unit
Heat output				Type of heat input, for electric storage local space heaters only (select one)	
Nominal heat output	P_{nom}	1,69	kW	manual heat charge control, with integrated thermostat	[no]
Minimum heat output (indicative)	P_{min}	0	kW	manual heat charge control with room and/or outdoor temperature feedback	[no]
Maximum continuous heat output	$P_{max,c}$	1,69	kW	electronic heat charge control with room and/or outdoor temperature feedback	[no]
Auxiliary electricity consumption				fan assisted heat output	[no]
At nominal heat output	el_{max}	N/A	kW	Type of heat output/room temperature control (select one)	
At minimum heat output	el_{min}	N/A	kW	single stage heat output and no room temperature control	[no]
In standby mode	el_{SB}	N/A	kW	Two or more manual stages, no room temperature control	[no]
				with mechanic thermostat room temperature control	[yes]
				with electronic room temperature control	[no]
				electronic room temperature control plus day timer	[no]
				electronic room temperature control plus week timer	[no]
Other control options (multiple selections possible)					
				room temperature control, with presence detection	[no]
				room temperature control, with open window detection	[no]
				with distance control option	[no]
				with adaptive start control	[no]
				with working time limitation	[no]
				with black bulb sensor	[no]
Contact details	Amiridis – Savvidis S.A. 87A, 17th Noemvriou str, P.C. 55534 Thessaloniki – Greece T: +302310944944 F: +302310944940				

NOTICE ABOUT RECYCLING



Your product is designed and manufactured with high quality materials and components which can be recycled and reused.

This symbol means that electrical and electronic equipment, at their end-of-life, should be disposed of separately from your household waste.

Please dispose of this equipment at your local community waste collection/recycling centre. In the European Union there are separate collection systems for used electrical and electronic products. Please help us to conserve the environment we live in!

DECLARATION OF CONFORMITY

Herewith, Amiridis-Savvidis S.A. states that this product, complies with the requirements of below directives:

EMC-Directive: 14 / 30 / EU

Low Voltage Directive: 14/ 35 / EU

ErP Directive 09 / 125 / EC

CE Marking: 93 / 68 / EEC

RoHS Directive: 11 / 65 / EU



The detailed declaration of conformity can be found at www.united-electronics.gr

EXCLUSIVE IMPORTER IN GREECE:

Amiridis – Savidis S.A.

87A, 17th November Str - P.C. 55534

Pylaia - Thessaloniki - Greece

T: 2310944944 | F: 2310944940

www.amiridis-savvidis.gr